

Onchocerca jakutensis , parassita
emergente del cervo sulle Alpi
Occidentali

ROSSI L., ALASAAD S., VISCONTI L.,
ROBETTO S, ORUSA R., MENEGUZ P.G.

Onchocerca spp.

O. volvulus = river blindness



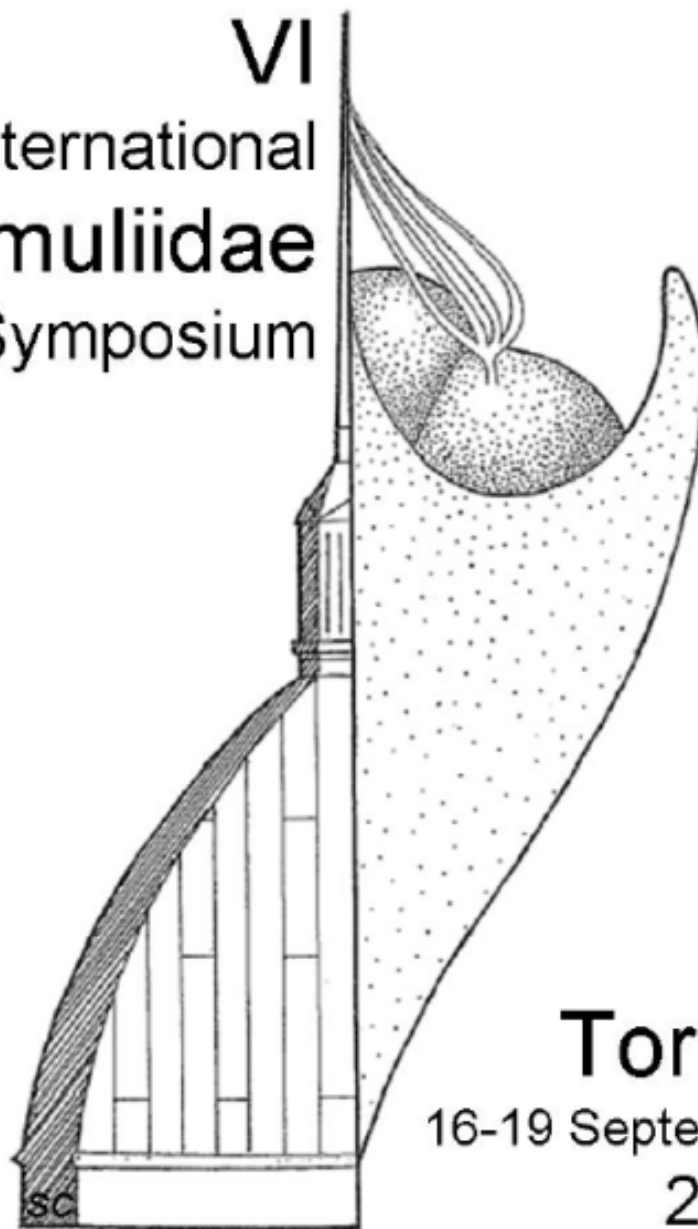
20.25 M/an







VI
International
Simuliidae
Symposium



Torino
16-19 September
2014

Abstract Book

Max diversité dans les Cervides

7 especes (4 en Europe)

2 especes → nodules sc

O. flexuosa

O. jakutensis

Distribution géographique

Europe Est

Allemagne

Espagne (*O. flexuosa*)

(Italie, Toscane, pop. reintroduite)

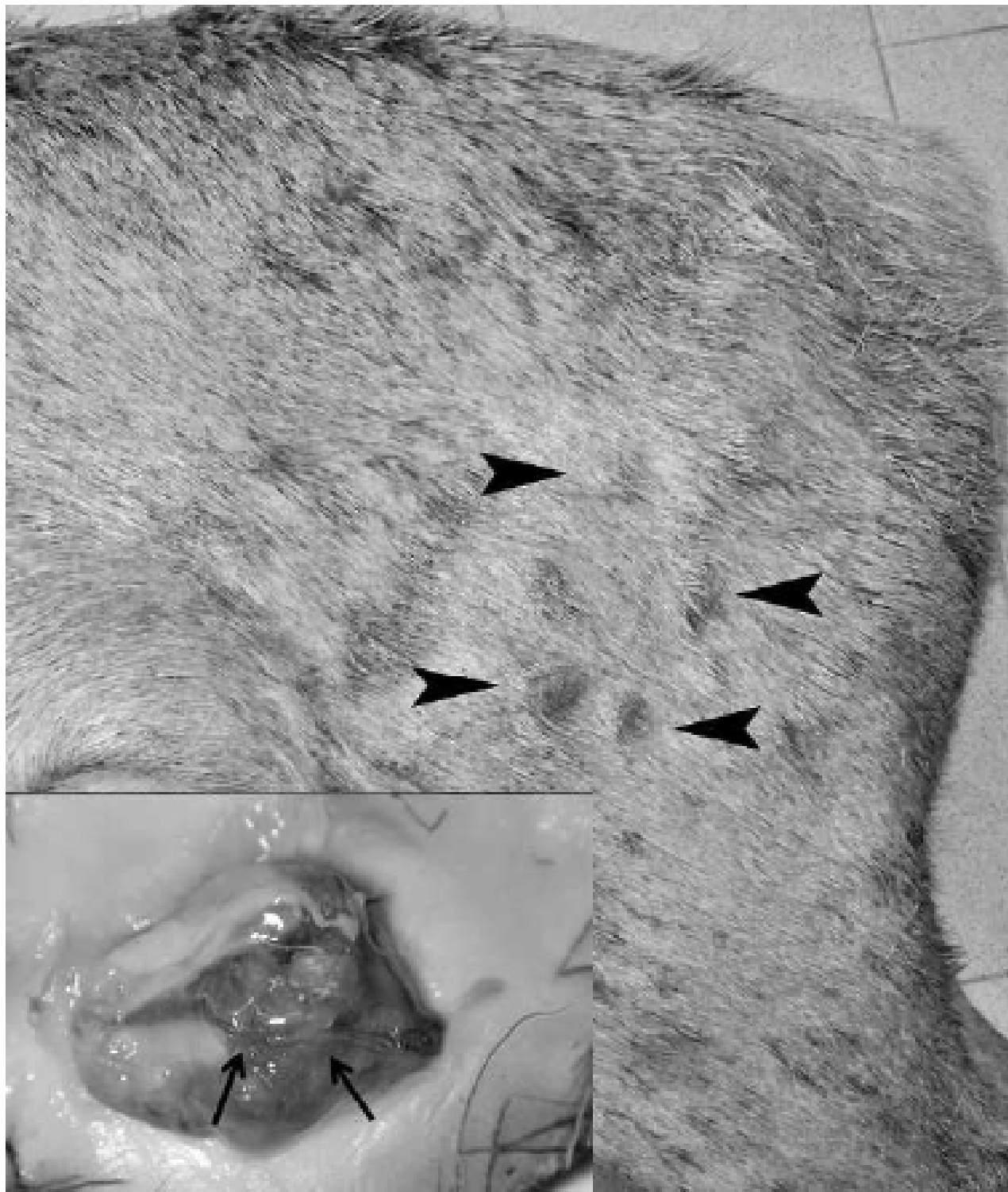
(Suisse, Grisons, pop. immigres)

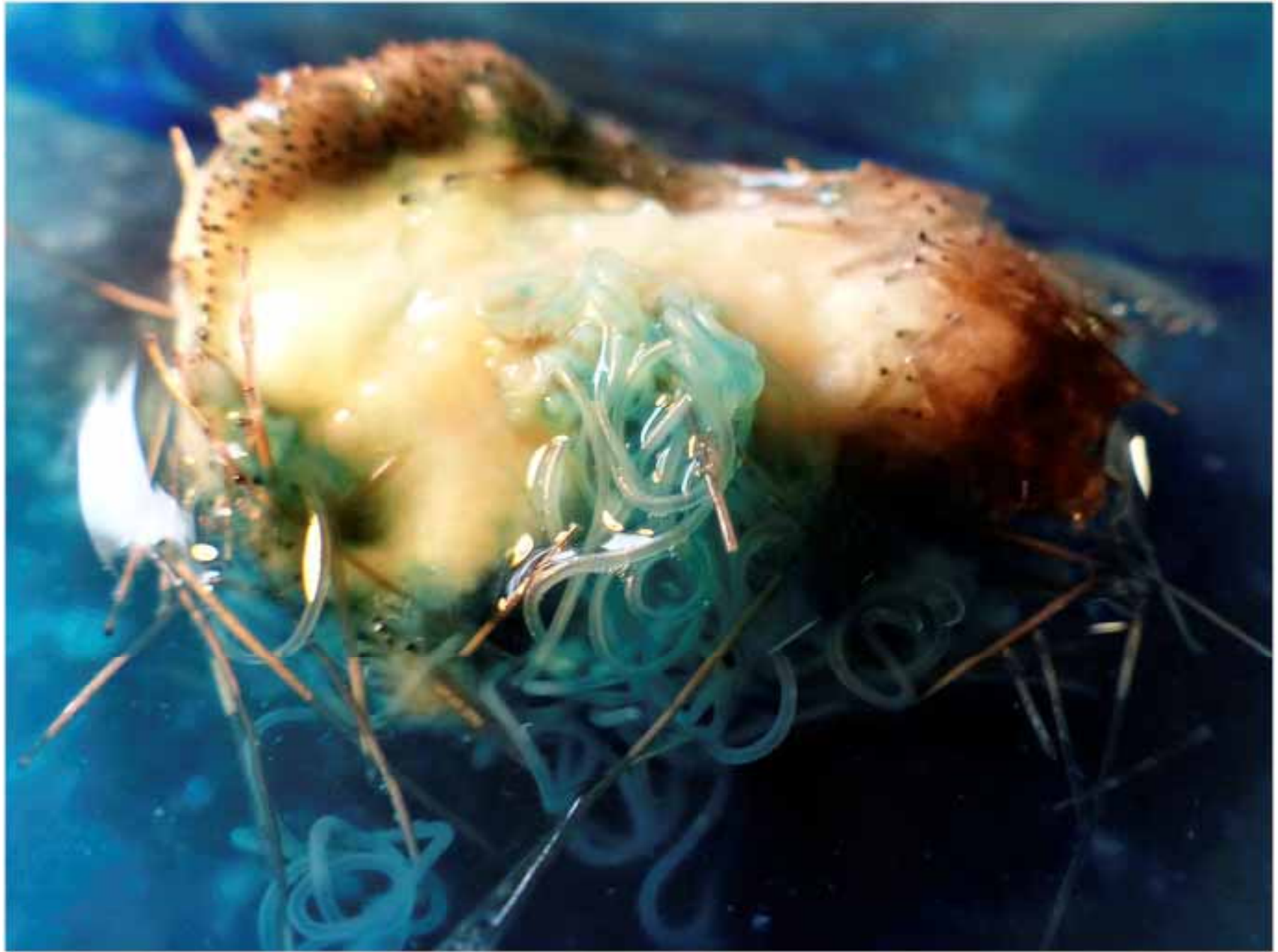
Zoonose

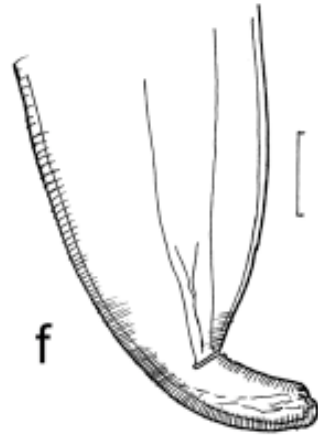
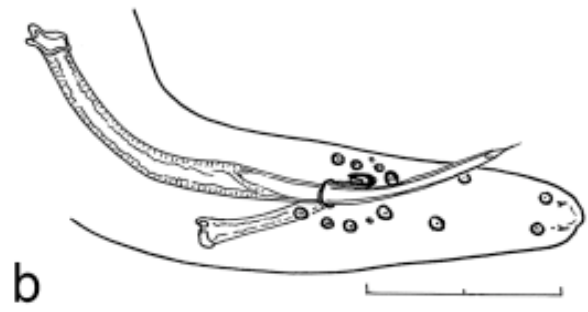
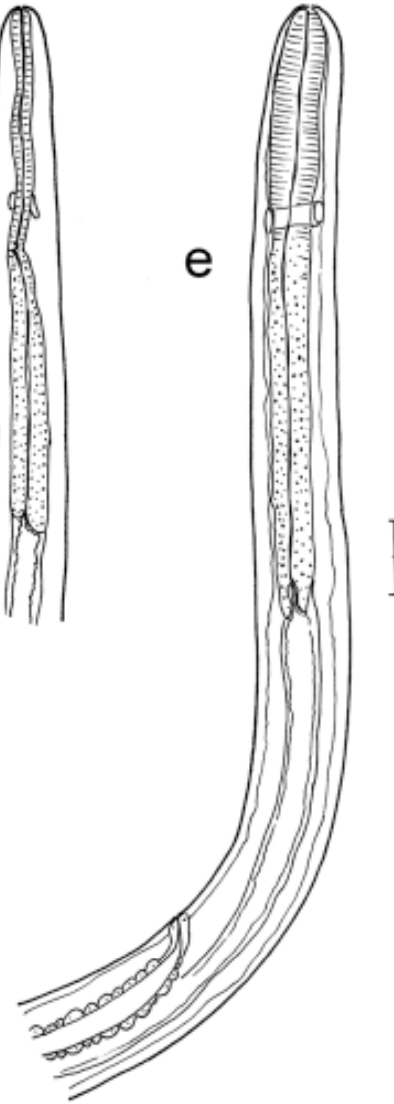
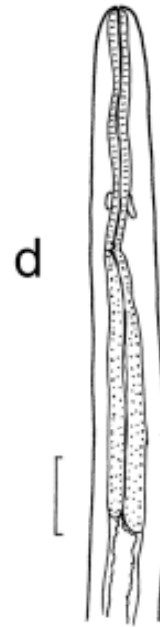
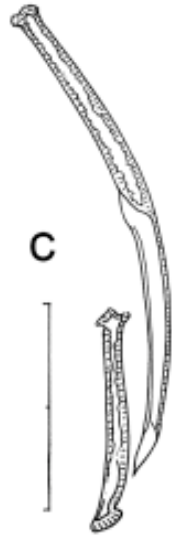
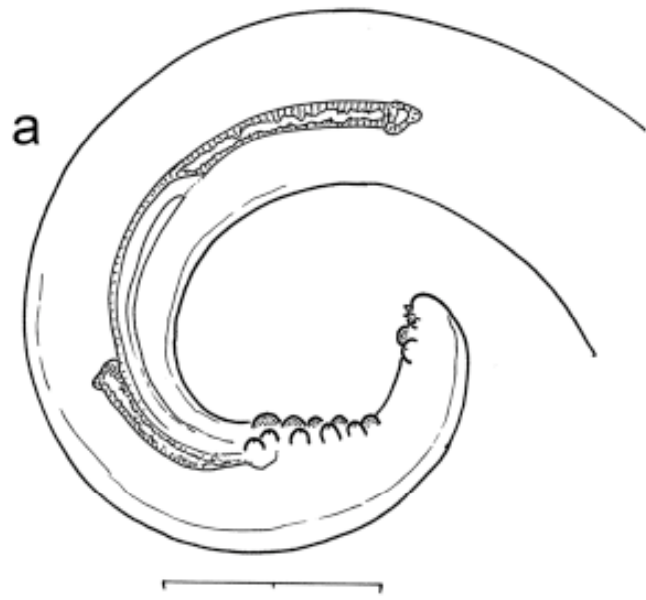
***Onchocerca jakutensis* Filariasis in Humans**

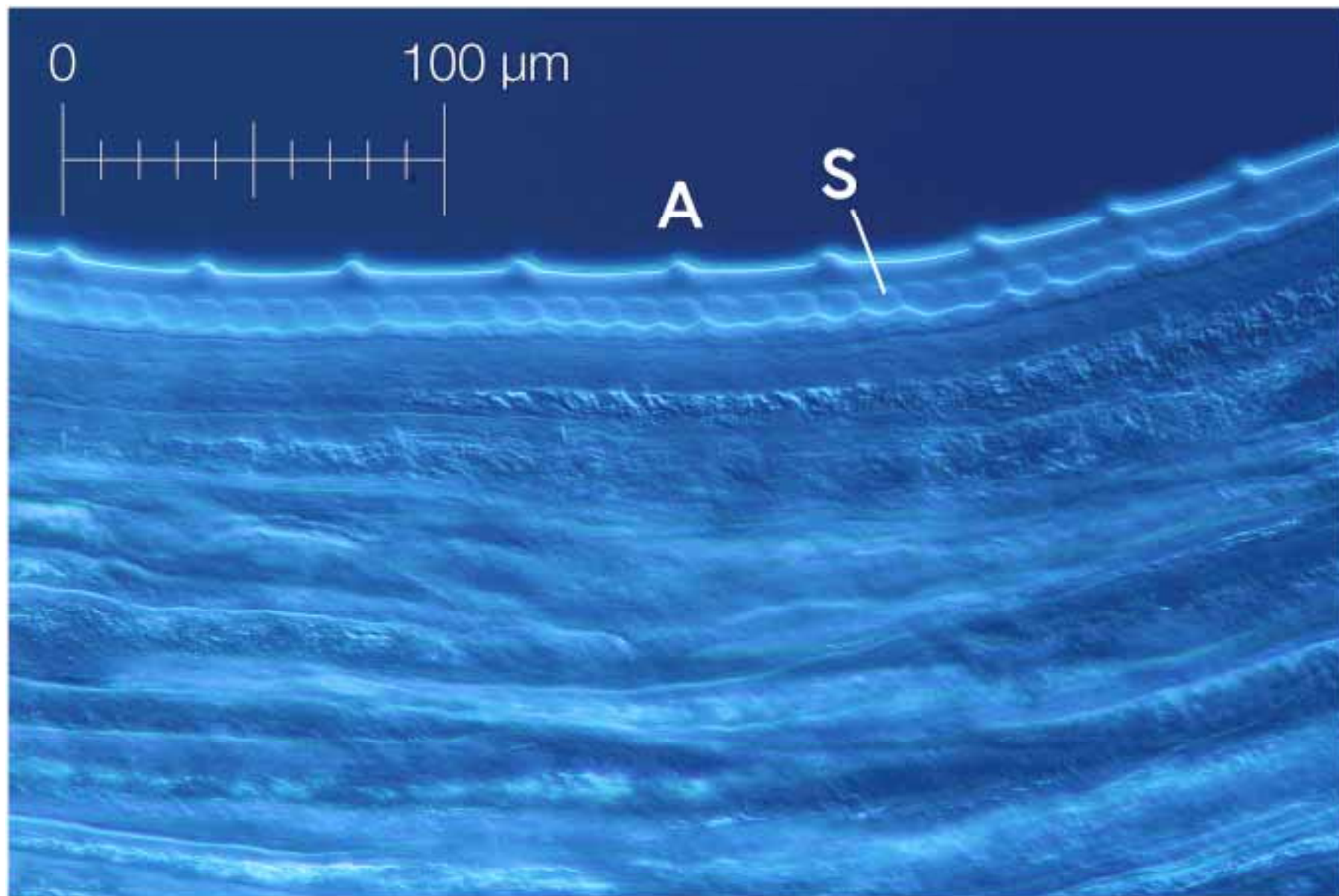
**Martina Koehsler,* Afschin Soleiman,*
Horst Aspöck,* Herbert Auer,*
and Julia Walochnik***

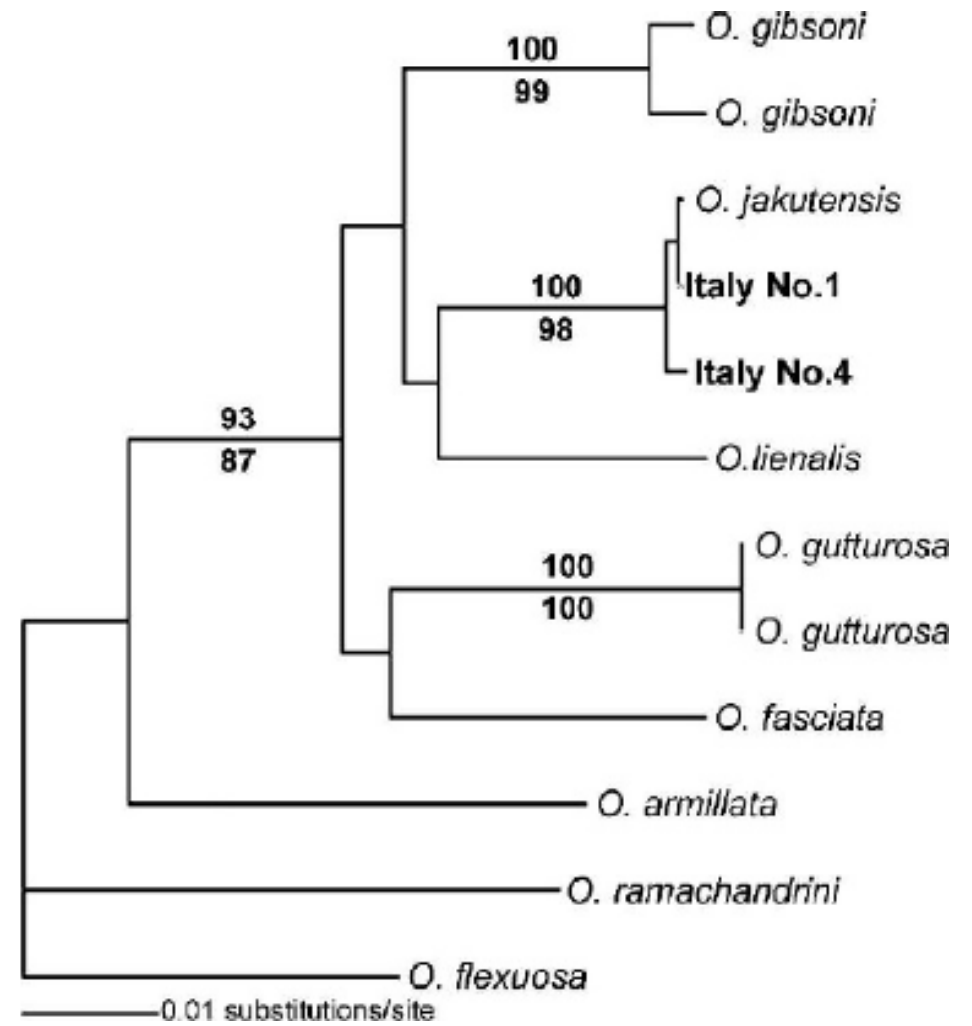
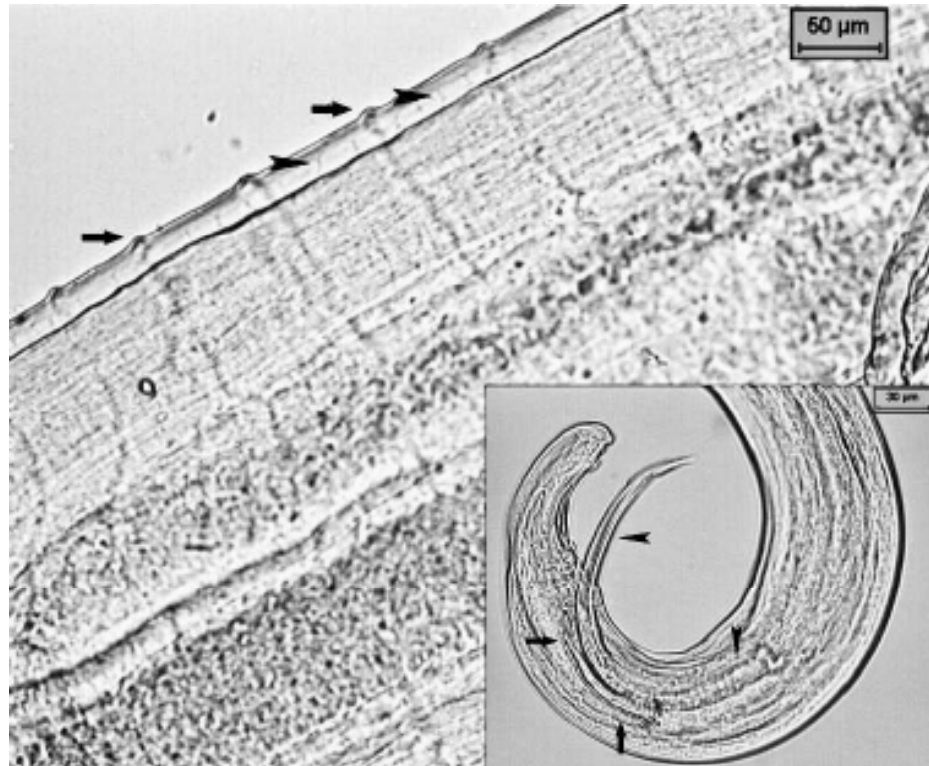
We identified *Onchocerca jakutensis* as the causative agent of an unusual human filariasis in a patient with lupus erythematosus. To our knowledge, this is the first case of human infection with *O. jakutensis* and the first human case of zoonotic onchocercosis involving >1 worm.











3 populations géographiquement isolées

1) Varese

2) Val Chisone/Val Susa (TO)

3) Valle Gran. S. Bernardo (AO)



N=715

Persistence (2012-2015)

Prevalence = 5-14%

Saisonnalité

Pas de biais sex/age

Origine?

1) Suisse (Tessin)

2) Autriche (Carinthie)

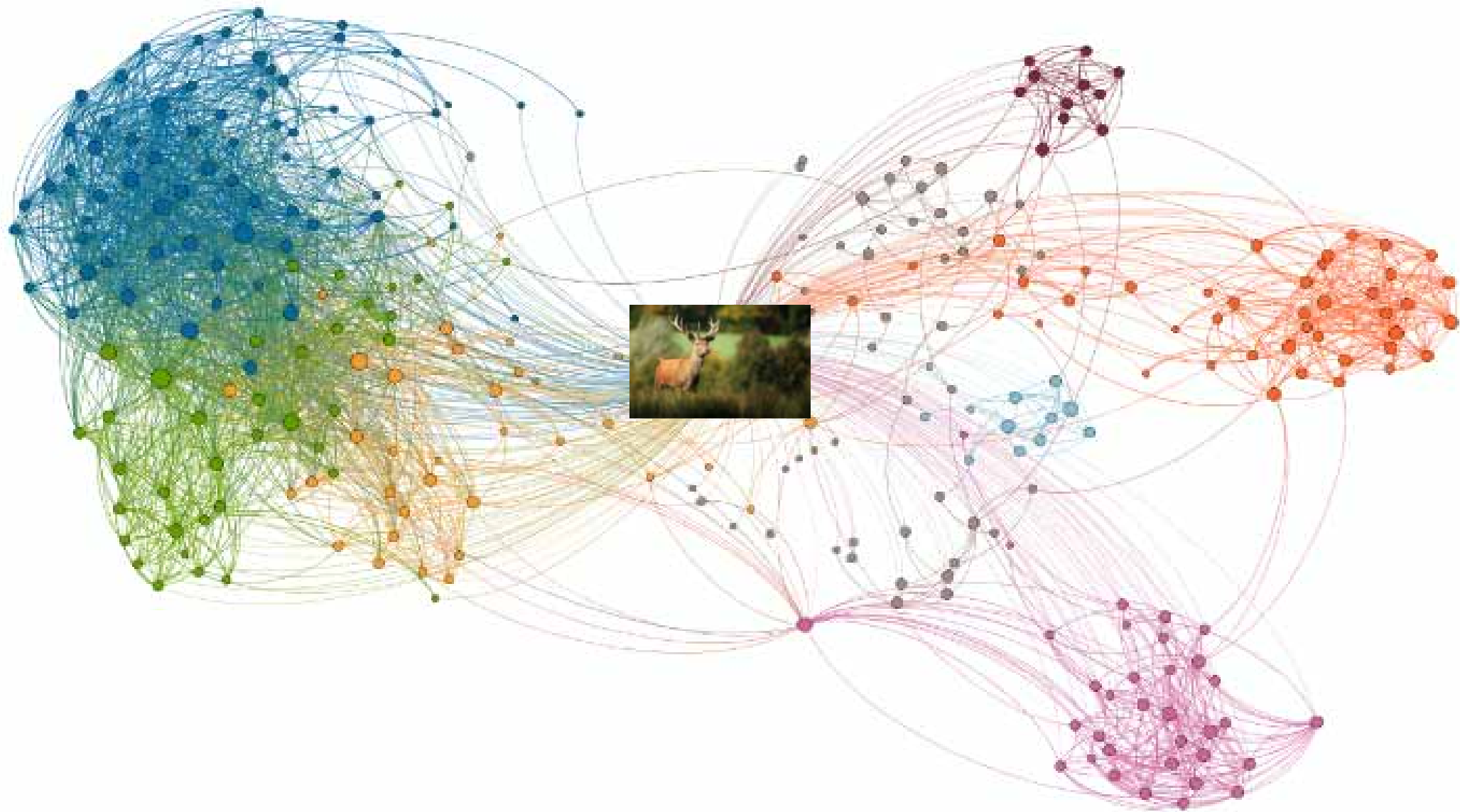
3) Suisse (Valais)

Changement climatique? Awareness? Ou?





Probleme sanitaire
ou
Reconquete de
Biodiversité?



Merci de votre attention