

IL TREND DI LUNGO TERMINE DELLA TRICHINELLOSI SILVESTRE NELL'ITALIA NORD OCCIDENTALE

**A DI BLASIO², S ROBETTO³, S ZOPPI², S
GALLINA², E FERROGLIO¹, R ORUSA³, PG
MENEGUZ¹, L ROSSI¹**

*¹Dipartimento di Scienze Veterinarie, Università di
Torino; ²IZS Piemonte Liguria Valle d'Aosta; ³IZS-
CERMAS Aosta*



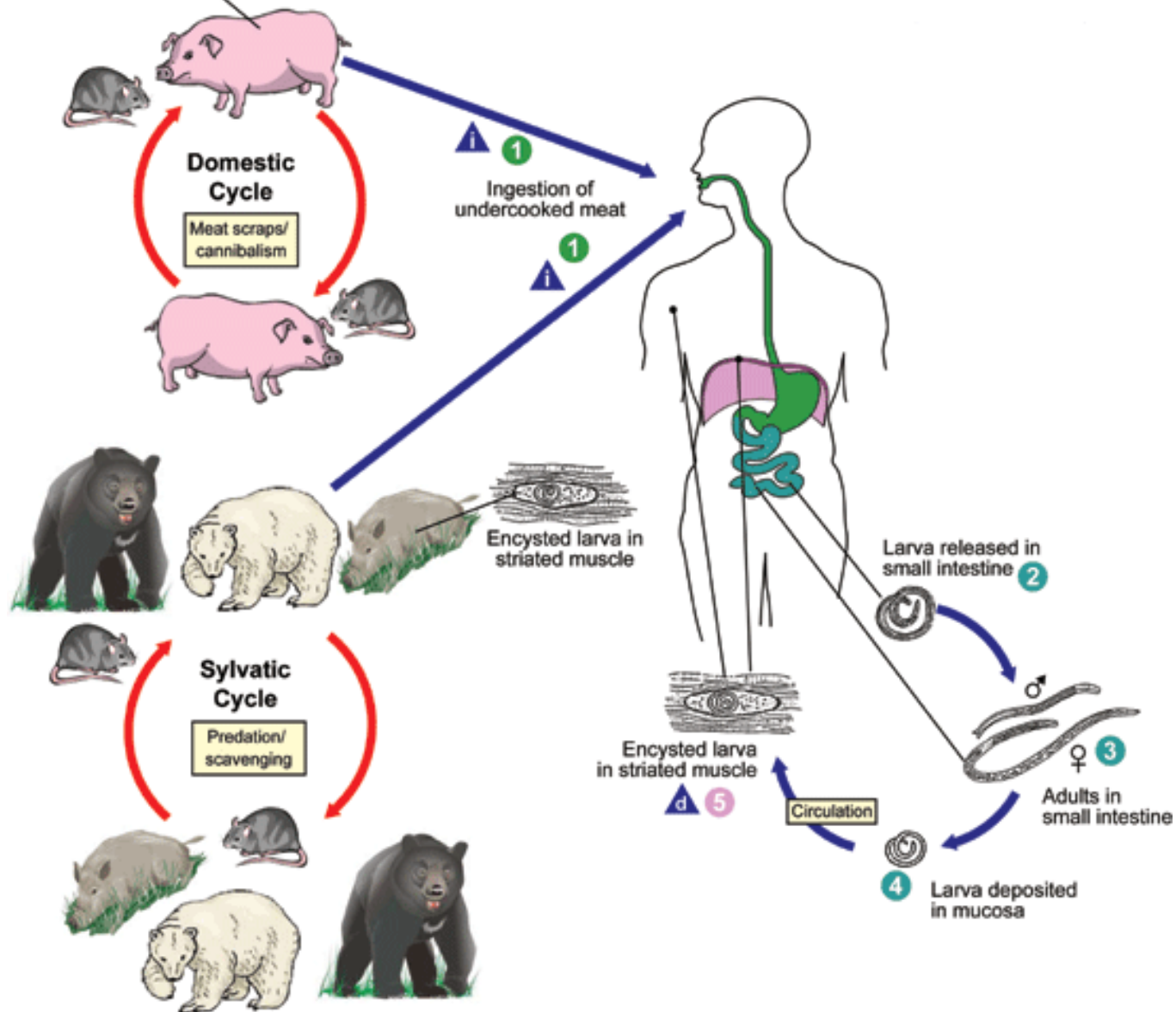
TRICHINELLA SPP.

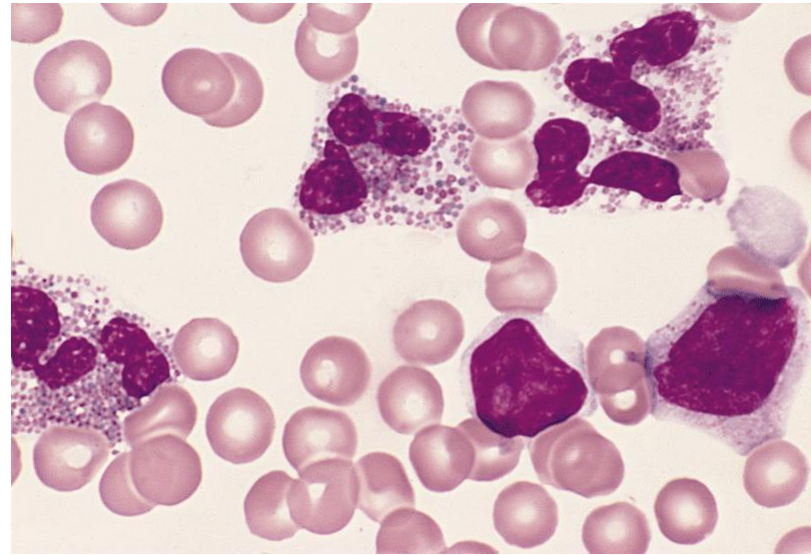
Trichinella spiralis

Encysted larva in striated muscle



i = Infective Stage
d = Diagnostic Stage

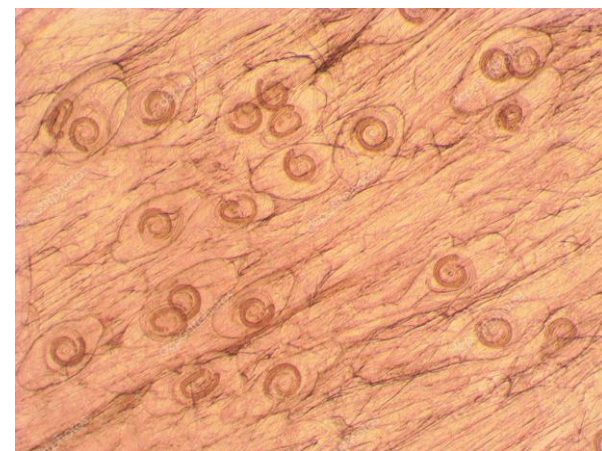
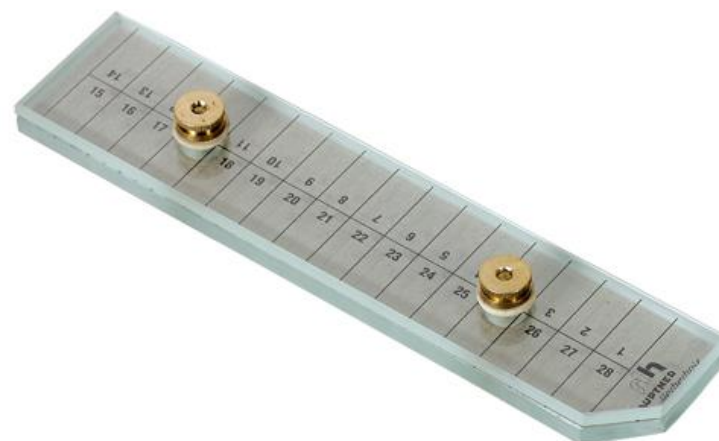




- *T.spiralis* (T1) - cosmopolita
- *T.nativa* (T2) – zone fredde emisfero nord
- *T.britovi* (T3) – zone temperate Eurasia + Africa
- *T.pseudospiralis* (T4) - cosmopolita
- *T.murrelli* (T5) – zone temperate Nord America
- T6 – zone fredde Nord America, prossima T2
- *T.nelsoni* (T7) – Africa sud-sahariana
- T8 – Africa sub-sahariana, prossima T3
- T9 – Giappone, prossima T3
- *T.papuae* (T10) – Nuova Guinea
- *T.zimbabwensis* (T11) – Africa sud-sahariana

TABELLA N. 5 - Diffusione della trichinosi volpina in Italia Settentrionale. Località di provenienza delle volpi esaminate ed esiti dei rispettivi esami trichinoscopici

Provincia	Valle	Località e risultati parziali	Volpi N.	Es. trichinoscopico		
				+	-	
C U N E O	PIEMONTE (Alessandria esclusa)					
	Vermenagna	Limone P. 1+, 1-; Renette V. 1+; Vernante 2+, 3-	6	4	4	
	Stura	Vinadio	3	-	3	
	Maira	Alta V. Maira 4+, 4-; Ponte Marmore 5+, 6-; Canosio 1+; Robilante 1+	21	11	10	
	Varaita	Casteldelfino 2+, 2-	4	2	2	
	Totali			36	17	19
	Pellice	Villar P.	1	-	1	
	Chisone	Inverso Porte 1+; S. Pietro V.C. 1+	2	2	-	
	Susa	Savoulx 1-; Ulzio 4+, 5-; Sauze 1-; Masinè 4-; Salabertano 2+; Crò Chiomonte 1-, 1-; Chiomonte 2-; Scandave 1-, 1-; Rigan 1+, 2-	26	10	16	
	Viù	Viù Roncaglio	1	1	-	
T O R I N O	Lanzo	Ceres 1+; S. Colombano B. 1-;	2	1	1	
	Orco e Soana	Ceresole 1+; Rueglio 1-; Fontana di L. 1-; Bandito 1-; Vische 1+; Frassinetto 1-; Pont Canavese 2+, 5-	13	5	8	
	Valchiavella	Alice S. 1-; Inverso di Drusacco 2-; Vico C. 1-	4	0	4	
	Totali			49	19	30



Rev. sci. tech. Off. int. Epiz., 1992, **11** (4), 1039-1046



Epidemiology of sylvatic trichinellosis in north-western Italy

L. ROSSI *, E. POZIO **, W. MIGNONE ***, C. ERCOLINI *** and V. DINI ****





HABITAT-RELATED

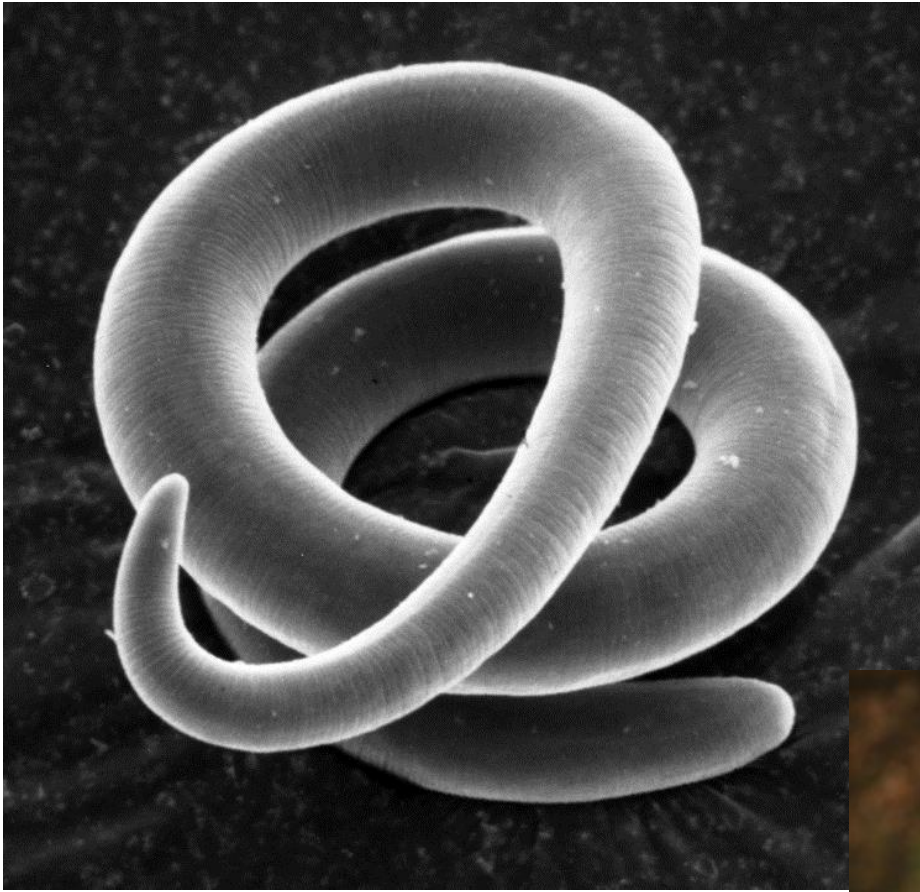


ORIGINAL PAPER

Luigi Remonti · Alessandro Balestrieri
Lorenzo Domenis · Cristina Banchi · Tatiana Lo Valvo
Serena Robetto · Riccardo Orusa

Red fox (*Vulpes vulpes*) cannibalistic behaviour and the prevalence of *Trichinella britovi* in NW Italian Alps







Cite this article: Probst C, Globig A, Knoll B, Conraths FJ, Depner K. 2017 Behaviour of free ranging wild boar towards their dead fellows: potential implications for the transmission of African swine fever. *R. Soc. open sci.* **4**: 170054. <http://dx.doi.org/10.1098/rsos.170054>

Received: 19 January 2017
Accepted: 27 April 2017

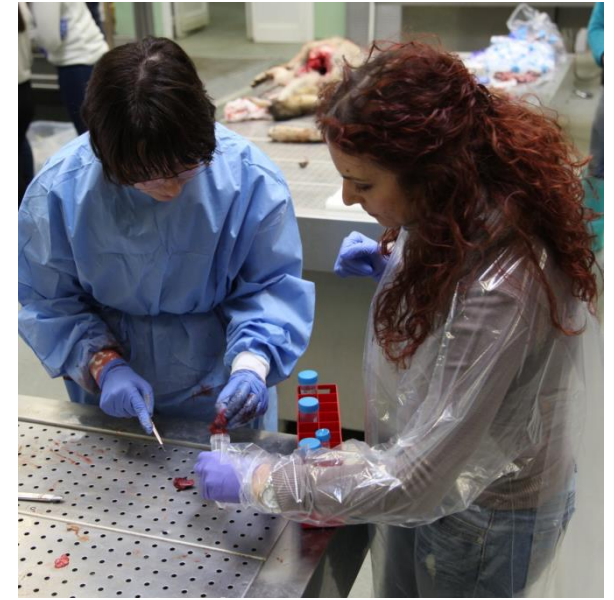
Behaviour of free ranging wild boar towards their dead fellows: potential implications for the transmission of African swine fever

Carolina Probst¹, Anja Globig¹, Bent Knoll², Franz J. Conraths¹ and Klaus Depner¹

¹Friedrich-Loeffler-Institut, Federal Research Institute for Animal Health, Institute of Epidemiology, Stübener 10, 17493 Greifswald Insel Riems, Germany
²Universitäts- und Landesbibliothek Greifswald, Markt 15, 17489 Greifswald, Germany







GROUP	PERIOD	PROVINCE	TRICHINELLA		PREVALENCE (%)	
			N.	Pos	PROVINCE	GROUP
1	Late 50s	CN	36	17	47.2	43.2
		TO	49	19	38.8	
		AO	26	12	46.1	
2	Late 80s	CN	35	9	25.7	20.0
	Early 90s	TO	49	13	27.6	
		AO	83	11	13.2	
3	2001- 2010	CN	258	16	6.2	4.1
		TO	307	7	2.3	
		AO	594	24	4.0	
4	2011- 2017	CN	149	2	1.3	1.1
		TO	110	1	0.9	
		AO	384	4	1.0	













5%



© James Morgan / Barcroft Images

Prevalenza della trichinellosi volpina
amplificata da comportamenti
dell'uomo

Se ci fossero stati cinghiali negli
Anni Cinquanta